



# FrameWork

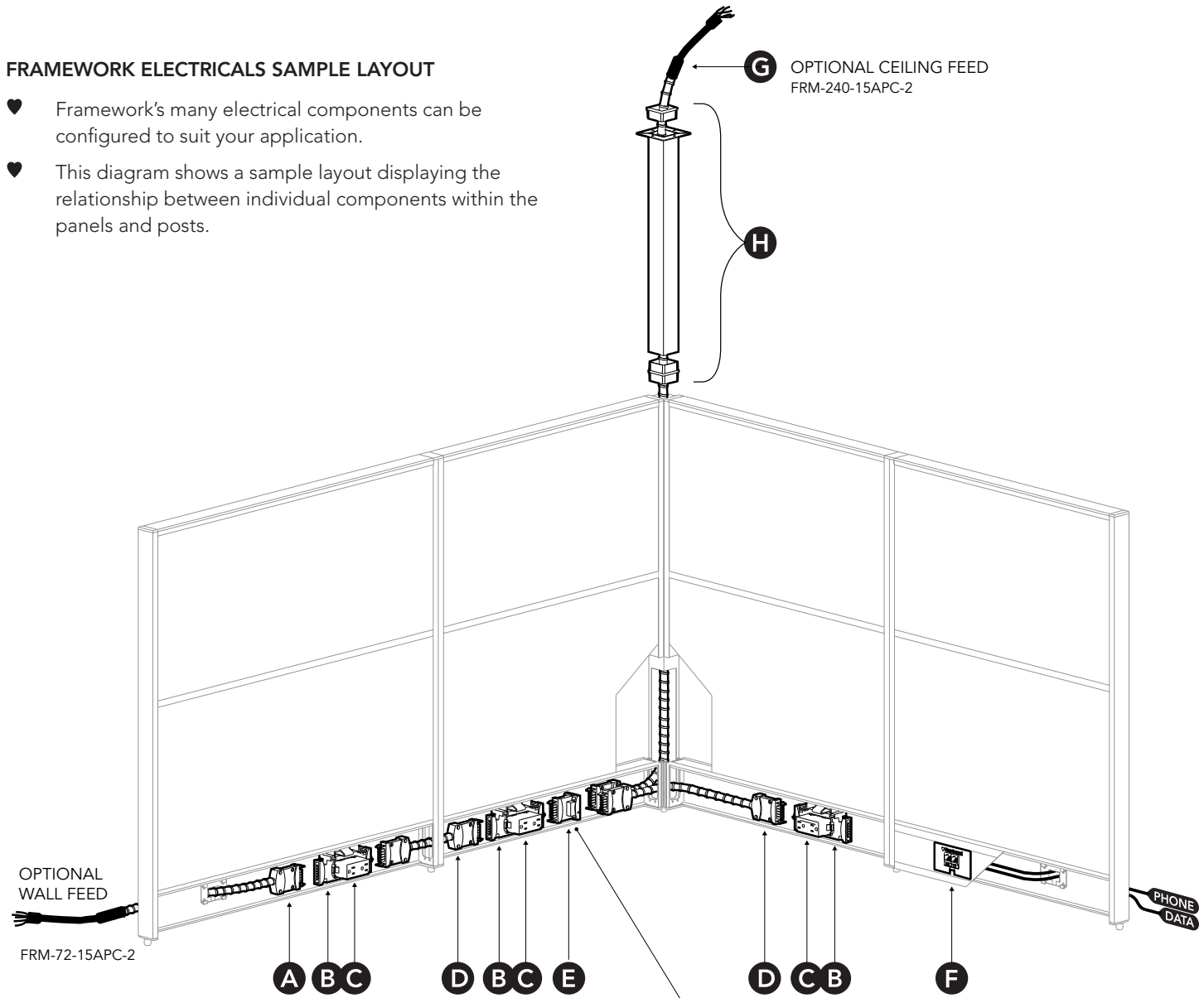
## Electrical Component Overview

- ♥ Framework Electrical components are UL Listed and CSA Certified
- ♥ 3 circuit 5 wire system - 3 hot, 1 neutral, 1 common ground
- ♥ Multi circuit infeed is able to carry up to 3 circuits. Not able to provide a dedicated/isolated circuit.
- ♥ A maximum of 10 duplex receptacles per circuit and up 3 circuits can be used on a single hardwire infeed.

# FRAMEWORK ELECTRICAL SYSTEM INSTALLATION

## FRAMEWORK ELECTRICALS SAMPLE LAYOUT

- ♥ Framework's many electrical components can be configured to suit your application.
- ♥ This diagram shows a sample layout displaying the relationship between individual components within the panels and posts.



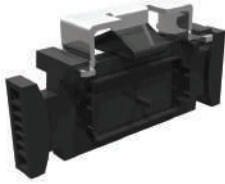
OPTIONAL WALL FEED  
FRM-72-15APC-2

OPTIONAL CEILING FEED  
FRM-240-15APC-2

PHONE DATA

ITEM	DESCRIPTION	MODEL
A	15 AMP POWER CORD 72" LONG	FRM-72-15APC-2-BL
B	POWER BLOCK WITH MOUNTING BRACKET	FRM-PB-BL
C	DUPLEX RECEPTACLE	FRM-DR-BL
D	ELECTRICAL JUMPER	FRM-JXX-BL
E	ELECTRICAL Y-CONNECTOR	FRM-Y-BL
F	CAT 6 JACK KIT	FRM-C6JK-BL
G	15 AMP POWER CORD 240" LONG	FRM-240-15APC-BL
H	CEILING FEED KIT	FRM-CLG-FD1

Y-CONNECTOR ALWAYS REQUIRED WHEN CONNECTING AN ELECTRICAL JUMPER THROUGH A POST



### POWER BLOCK WITH MOUNTING BRACKET

INSTALL IN A PANEL RACEWAY TO PROVIDE ACCESSIBLE POWER. CAN ACCEPT DUPLEX RECEPTACLES ON ONE OR BOTH SIDES.

**FRM-PB**

AVAILABLE FINISH: BLACK (BL)



### 15 AMP POWER CORD - MULTI-CIRCUIT (FRM-DR, FRM-DR2 & FRM-DR3)

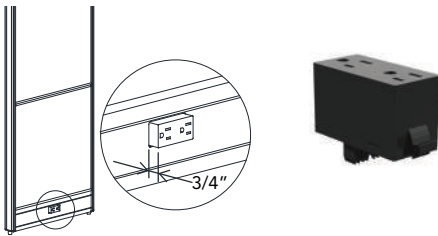
USE WITH A FRM-PB-BL POWER BLOCK AND FRM-DR-BL POWER RECEPTACLES TO BRING POWER TO YOUR PANEL RACEWAY. 6' LONG. MAX 10 DUPLEX RECEPTACLES PER CIRCUIT. UP TO 3 CIRCUITS PER MULTI CIRCUIT POWER CORD.

**FRM-72-15APC-2**      72" CORD LENGTH

**FRM-240-15APC-2**      240" CORD LENGTH

AVAILABLE FINISH: BLACK (BL)

**MULTI-CIRCUIT WIRING REQUIRES PROFESSIONAL ELECTRICAL INSTALLATION.**



FRM-DR-BL IN POSITION

### DUPLEX RECEPTACLE

INSTALL ON A FRM-PB POWER BLOCK.

**FRM-DR**

DUPLEX RECEPTACLE

**FRM-DR2\***

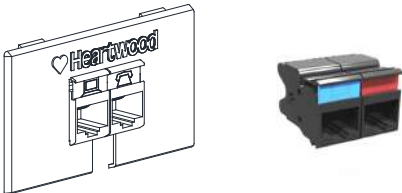
DUPLEX RECEPTACLE (CIRCUIT 2)

**FRM-DR3\***

DUPLEX RECEPTACLE (CIRCUIT 3)

AVAILABLE FINISH: BLACK (BL)

\* FRM-DR2 & FRM-DR3 ARE FOR MULTI-CIRCUIT USE ONLY. CONTACT CUSTOMER SERVICE FOR CONFIGURATIONS.



FRM-C6JK-BL SNAPPED INTO GROMMET

### CAT 6 JACK KIT (2 CAT 6 JACKS)

INSTALL IN PANEL GROMMETS.

**FRM-C6JK**

AVAILABLE FINISH: BLACK (BL)



### ELECTRICAL Y-CONNECTOR

NEEDED WHENEVER AN ELECTRICAL JUMPER PASSES THROUGH A POST OR TO BRANCH A SECOND ELECTRICAL JUMPER OFF OF A POWER BLOCK

**FRM-Y**

AVAILABLE FINISH: BLACK (BL)



### CEILING FEED SET

**FRM-CLG-FD1**

AVAILABLE FINISH: CHARCOAL FINISH MATCHING FRAMEWORK POSTS & PANEL TRIM.

### ELECTRICAL JUMPER



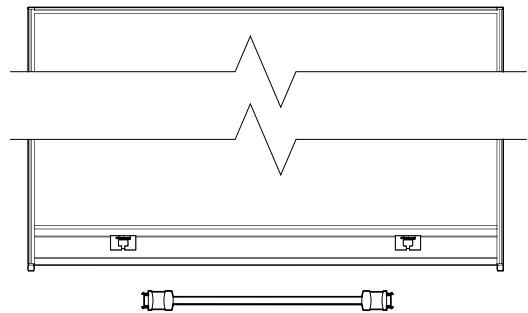
FRM-J12	12" ELECTRICAL JUMPER
FRM-J18	18" ELECTRICAL JUMPER
FRM-J24	24" ELECTRICAL JUMPER
FRM-J30	30" ELECTRICAL JUMPER
FRM-J36	36" ELECTRICAL JUMPER
FRM-J42	42" ELECTRICAL JUMPER
FRM-J48	48" ELECTRICAL JUMPER
FRM-J54	54" ELECTRICAL JUMPER
FRM-J60	60" ELECTRICAL JUMPER
FRM-J66	66" ELECTRICAL JUMPER
FRM-J72	72" ELECTRICAL JUMPER
FRM-J78	78" ELECTRICAL JUMPER
FRM-J84	84" ELECTRICAL JUMPER
FRM-J90	90" ELECTRICAL JUMPER
FRM-J96	96" ELECTRICAL JUMPER
FRM-J102	102" ELECTRICAL JUMPER
FRM-J108	108" ELECTRICAL JUMPER
FRM-J114	114" ELECTRICAL JUMPER

NOTE: LIMITED STOCK IN SOME SIZES  
AVAILABLE FINISH: BLACK (BL)

## FRAMEWORK WIRING HARNESS SIZES

### INSIDE OF PANEL CONNECTION WIRING HARNESS SIZES

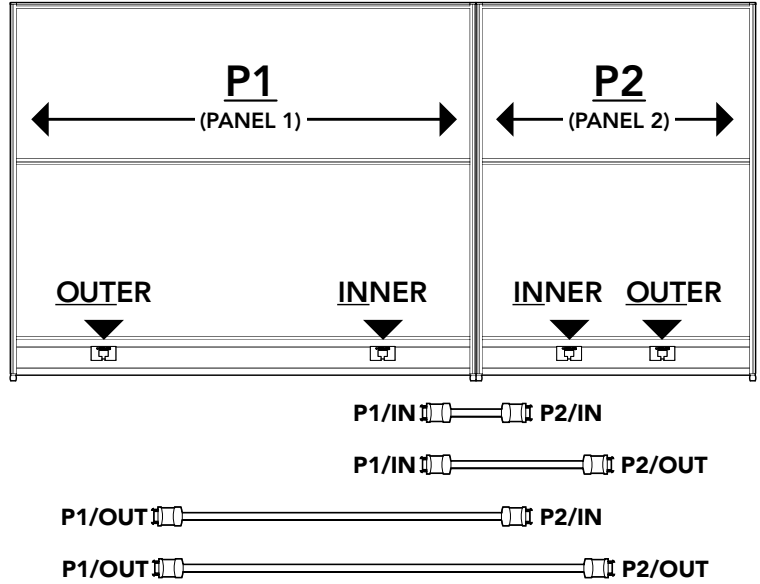
- ♥ Use to determine the correct electrical jumper to use inside a single panel when connecting between grommets.
- ♥ Not Applicable to 24" panel due to having 1 grommet only, and 30" and 36" panels due to lack of space between grommets.



PANEL	24"	30"	36"	42"	48"	60"	66"	72"
	X	X	X	┌─┐	┌─┐	┌─┐	┌─┐	┌─┐
JUMPER	N/A	N/A	N/A	USE J12	USE J18	USE J30	USE J36	USE J42

**PANEL-TO-PANEL CONNECTION WIRING HARNESS SIZES**

- ♥ Use the below matrix to determine the correct electrical jumper to use when connecting between two grommets on two connected adjacent panels.
- ♥ If using a post between the two panels, then add a Electrical Y-Connector - FRM-Y-BL
- ♥ Note: Due to the 24" panel having 1 centrally located grommet only, the grommet is referred to as CENTRE.



		P2															
		24" CENTRE	30" IN	30" OUT	36" IN	36" OUT	42" IN	42" OUT	48" IN	48" OUT	60" IN	60" OUT	66" IN	66" OUT	72" IN	72" OUT	
<b>P1</b>	<b>24" CENTRE</b>	J18	J18	J24	J18	J30	J18	J36	J18	J42	J18	J54	J18	J60	J18	J66	
	<b>30"</b>	<b>OUT</b>	J24	J24	J30	J24	J36	J24	J42	J24	J48	J24	J60	J24	J66	J24	J72
		<b>IN</b>	J18	J18	J24	J18	J30	J18	J36	J18	J42	J18	J54	J18	J60	J18	J66
	<b>36"</b>	<b>OUT</b>	J30	J30	J36	J30	J42	J30	J48	J30	J54	J30	J66	J30	J72	J30	J78
		<b>IN</b>	J18	J18	J24	J18	J30	J18	J36	J18	J42	J18	J54	J18	J60	J18	J66
	<b>42"</b>	<b>OUT</b>	J36	J36	J42	J36	J48	J36	J54	J36	J60	J36	J72	J36	J78	J36	J84
		<b>IN</b>	J18	J18	J24	J18	J30	J18	J36	J18	J42	J18	J54	J18	J60	J18	J66
	<b>48"</b>	<b>OUT</b>	J42	J42	J48	J42	J54	J42	J60	J42	J66	J42	J78	J42	J84	J42	J90
		<b>IN</b>	J18	J18	J24	J18	J30	J18	J36	J18	J42	J18	J54	J18	J60	J18	J66
	<b>60"</b>	<b>OUT</b>	J54	J54	J60	J54	J66	J54	J72	J54	J78	J54	J90	J54	J96	J54	J102
		<b>IN</b>	J18	J18	J24	J18	J30	J18	J36	J18	J42	J18	J54	J18	J60	J18	J66
	<b>66"</b>	<b>OUT</b>	J60	J60	J66	J60	J72	J60	J78	J60	J84	J60	J96	J60	J102	J60	J108
		<b>IN</b>	J18	J18	J24	J18	J30	J18	J36	J18	J42	J18	J54	J18	J60	J18	J66
	<b>72"</b>	<b>OUT</b>	J66	J66	J72	J66	J78	J66	J84	J66	J90	J66	J102	J66	J108	J66	J114
		<b>IN</b>	J18	J18	J24	J18	J30	J18	J36	J18	J42	J18	J54	J18	J60	J18	J66

## Select **HDL** FrameWork series, and embrace the **Heartwood Advantage**.

- ✓ Knowledgeable customer service reps
- ✓ On time delivery
- ✓ Additional packaging and care is taken to eliminate freight damage
- ✓ Satisfaction guaranteed
- ✓ View stock levels online

### ✓ Limited **LIFETIME** Warranty

HDL is pleased to offer a limited lifetime warranty on all laminate products. For specific series warranty details, please refer to the downloadable Limited Lifetime Warranty document online.



### ✓ The **IN-STOCK** Advantage

HDL is committed to maintaining stock at all times. Every effort will be made to ensure these products are available.



### ✓ **ECO** Story

HDL is committed to supplying office furniture products in an environmentally responsible manner. We are proud to partner with like-minded corporate citizens who align environmental stewardship with their company's core values and goals.



### **Heartwood Distributors Ltd.**

Choose high quality, price sensitive products that are **IN-STOCK** and ready for next day shipping.

[www.heartwooddl.com](http://www.heartwooddl.com)

A 251 Adams Rd, Kelowna, BC V1X 7R1  
T 1 800 567 3060  
F 250 765 1213



Contact your local dealer: