

ACCESSORIES



Keyboard Trays



100-KD28
Keyboard drawer
Extra width for mouse
Available Finish: all standard
Innovations laminate finishes
and Black (BL)



100-COBRA
Spring-Assisted Adjustable Keyboard
Tray
Easy to use lever handle adjustment
Ergonomic design including wrist rest
Weight capacity: 2kg / 4.4 lbs
Tray tilt function 13° to 15°
Swivel range -180° to 180°
Mounting plate depth - 24.8"
Available Finish: Black (BL)



100-AKTM-2
Articulating Keyboard Tray
Large 26" w x 9.7" d tray
Holds up to 2.2 lbs
Height adjustment - 4 1/4"
Tilting adjustment - 16° / +20°
Telescoping tray slides completely
under the work surface
Requires 13 1/2" of depth clearance
under the work surface
Vinyl wrapped MDF construction
with wrist rest
Optional brackets to lower the
mechanism and clear obstructions
under the work surface. Clears 2 1/4"
Available Finish: Black (BL)



100-KB2
Articulating Keyboard Tray
Track mount hide-away design with 12.75"
slide travel distance
18.5" clearance needed for install
Height adjustment (6.75")
Swivel range: -20° to 20°
Heavy-duty steel construction provides
extra strength & durability
Available Finish: Black (BL)

Power Options



100-DRAWER
Metal Storage Drawer
Undermount, space-saving storage
drawer ideal for sit-to-stand applications
Solid steel construction w/ slim, flush
mount design
Smooth glide drawer mechanism -
drawer track travel 170mm (6.7")
Weight capacity: 5kg / 11 lbs
Compatible with calypso height
adjustable desking 30" deep or greater
Available Finish: Black (BL)



100-WCD-USB
Wireless & USB charging drawer
5' cord, UL certified
1 USB, 1 power
2.36" / 60mm hole size
Site install required
Available Finish: Black (BL)



100-FTP-DATA
Flush flip top power grommet
3 power, 2 data
Includes 10' power cord, UL certified
Streamline profile with hidden
receptacles when in flipped position
Site install required
Available Finish: Black (BL)



100-FTP-USB
Flush flip top power grommet
3 power, 2 USB, 1 data
Includes 10' power cord, UL certified
Streamline profile with hidden
receptacles when in flipped position
Site install required
Available Finish: Black (BL)



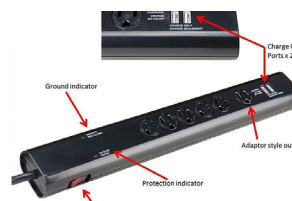
100-GRP-USB
Power grommet with USB
5' cord, UL certified
1 USB, 1 power
2.36" / 60mm hole size
Site install required
Available Finish: Black (BL)



100-DTP2-USB
Clamp to edge of desk or clamp through
our grommet holes (clamp width 60mm)
Fit existing HDL & Heartwood standard
rectangular grommet holes!
2 power
2 USB charging (charging only)
angled, bracket mount design
6' power cord
cUL certified for use in Canada
Available Finish: Black (BL) & White (WH)



100-UMNT-USB-AA
Mounts flush to underside of worksurface
2 power
2 USB charging (charging only)
6' power cord
UL certified
Available Finish: Black (BL)



100-PB6-USB
USB charger - 2- 2.1AMP ports - 5V DC
- 2.1A per port
USB charging only
6 - AC 120V ground plugs
10' power cord with 90° plug
CUL certified for use in Canada
Available Finish: Black (BL)

ACCESSORIES



Monitor Arms



100-MA1B
 Desk clamp and/or grommet mount
 14" height adjustment range: 5"– 19"
 24.0" arm extension
 90° monitor tilt /90° VESA rotation
 4.4 lbs.–19.8 lbs. weight capacity
 Exceeds BIFMA x5.5 requirements
 10yr warranty
 Finger touch height adjustment
 VESA quick release
 36.0" max. monitor
 Available Finish: Black (BL) or Silver (SL)



100-MA2B
 Desk clamp and/or grommet mount
 14" height adjustment range: 5"– 19"
 24.0" arm extension
 90° monitor tilt /90° VESA rotation
 4.4 lbs.–19.8 lbs. weight capacity (per arm)
 Exceeds BIFMA x5.5 requirements
 10yr warranty
 Finger touch height adjustment
 VESA quick release
 32.0" max. monitor
 Available Finish: Black (BL) or Silver (SL)



100-MA1
 Pneumatic monitor arm - single
 Capacity: 19.8 lbs
 Clamp to desk or grommet mount
 Landscape or portrait orientation
 Holds monitor 13" - 30"
 90° swivel angle
 180° rotation in both directions
 15° tilt angle
 Available Finish: Black (BL) or Silver (SL)



100-MA2
 Pneumatic monitor arm - double
 Capacity: 16 lbs per arm
 Clamp to desk or grommet mount
 Landscape or portrait orientation
 Holds monitor 13" - 30"
 90° swivel angle
 180° rotation in both directions
 15° tilt angle
 Available Finish: Black (BL) or Silver (SL)



100-LPTP
 Laptop holder attachment for
 pneumatic monitor arms
 Compatible with 100-MA1, 100-MA2
 100-MA1B & 100-MA2B
 Fits laptop 11" to 15.6"
 Easy install
 Available Finish: Black (BL)



100-MA2C
 Pneumatic monitor arm - double
 Capacity: 22 lbs per arm
 Clamp to desk or grommet mount
 Landscape or portrait orientation
 Holds monitor 17" - 32"
 90° swivel angle
 180° rotation in both directions
 40° tilt angle
 Available Finish: Black (BL)



100-LCD1
 LCD single monitor arm
 Capacity: 22 lbs
 Grommet mount
 Available Finish: Silver (SL)



100-LCD2
 LCD dual monitor arm
 Capacity: 13.2 lbs per arm
 Grommet mount
 Available Finish: Black (BL) or Silver (SL)

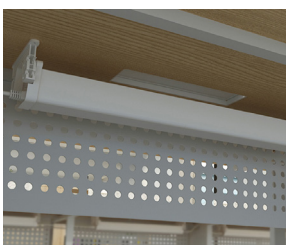
Wire Management



100-WIRE
 Wire management kit
 Includes 5 hangers and mounting
 hardware
 Available Finish: Light Grey (GR)



100-WM1300
 Wire management for height
 adjustable
 Length can be easily changed
 Available Finish: Black (BL), Silver (SL)
 or White (WH)



100-WMT22
 22" Wire Management Tray
 Easy accessibility
 Interlocking units for easy expansion
 Available Finish: White (WH)



100-WMT22-RACK
 22" Wire Management RACK
 Easy accessibility
 Includes mounting hardware
 Available Finish: Light Grey (GR)

ACCESSORIES



CPU Holders

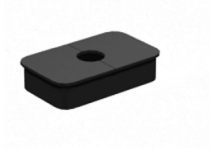


100-2-HCPU
 Hanging CPU holder
 Fixed location install
 Adjustable for different width CPU units
 Durable heavy-gauge steel
 Mounting hardware included
 Available Finish: Black (BL) & White (WH)



100-HCPU
 Track installed, retractable hanging CPU holder
 Track depth 16"
 Adjustable for different width CPU units
 Swivels 360 degrees
 Supports CPU up to 50lbs
 Durable heavy-gauge steel
 Mounting hardware included
 Available Finish: Black (BL)

Grommets



100-GR1
 2" x 3" Rectangular Grommet
 Site install required
 Available Finish: Black (BL) & Grey (GR)

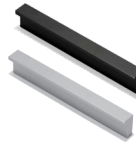


100-GR3
 3" Round Grommet
 Site install required
 Available Finish: Black (BL)

Handles



Aluminium Scoop - 2 Sizes
 Default handle for Evening Zen & Grey Dusk. Order separately to retrofit other laminate finishes.
 Available finish: Aluminium (AL)



Bar
 Default handle for Winter Wood laminate finish is Aluminium Bar. Order separately to retrofit other laminate finishes or for Black Bar handles
 Available finish: Black (BL) & Aluminium (AL)



Black Scoop - 2 Sizes
 Default handle for Autumn Maple, Sugar Maple, Hardrock Maple & Royal Mahogany laminate finishes Order separately to retrofit other laminate finishes.
 Available finish: Black (BL)



Step - 2 Sizes
 Optional handles. Order separately.
 Available finish: Champagne (CP)

Task Lights

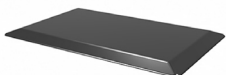


100-LED36TL - 36"
100-LED48TL - 48"
 LED task light
 160° swivel feature
 Max Watt is 180W in-line
 Built-in occupancy option
 Available Finish: Aluminium (AL)



100-24TL - 24"
100-36TL - 36"
100-48TL - 48"
 Fluorescent task light
 Available Finish: Black (BL)

Anti-fatigue Mat



100-2030AFM
 PVC with a high-density polyurethane core
 Easy clean
 Able to withstand common house fluids such as grease & liquids
 non-curling bevelled edges
 Available Finish: Black (BL)

ACCESSORIES



Storage



100-MMPUF
Metal Mobile Storage
 Box/box/file
 All drawers lock
 Can be keyed alike see 100-COREPACK
 Available Finish: Black (BL), Titanium (TT) and White (WH)



100-MMPFF
Metal Mobile Storage
 File/file
 All drawers lock
 Can be keyed alike see 100-COREPACK
 Available Finish: Black (BL), Titanium (TT) and White (WH)



100-MMPF
Metal Mobile Storage
 Box/file
 All drawers lock
 Heavy-duty casters
 Max. additional weight capacity 220lbs
 Can be keyed alike see 100-COREPACK
 Available Finish: Black (BL) & Titanium (TT)



100-MMPF-CUSHFA (Fabric)
100-MMPF-CUSHPU (Polyurethane)
Metal Mobile Pedestal Cushion
 Optional cushion
 Pedestal sold separately
 Easy velcro attachment
 For use with 100-MMPF **ONLY**



100-COREPACK
 Locking units ship with random key numbers unless units need to be keyed alike.
 For Keyed alike units order 100-COREPACK -the number of keyed alike units
 Example: 100-COREPACK-3 for three units keyed alike

Desk Top Height Adjustable Unit



100-DTHA
 Converts traditional desk to standing desk
 Adjusts to heights between 6.5" & 16"
 Gas strut for easy height adjustment
 Durable construction
 Compatible with pneumatic monitor arms
 Available finish: Black (BL)

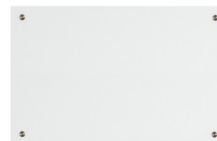


100-2-DTHA
 Heavy-duty steel & melamine construction for maximum stability
 Includes anti-slip pads on base
 Squeeze lever height-adjustment design
 Keyboard weight capacity: 2 kg / 4.4 lbs
 Height range 160mm - 445 mm / 6.3" -17.5"
 Compatible with pneumatic monitor arms
 Available finish: Black (BL)

Glass Whiteboard



INV-1668MB
16" x 68" Glass Dry Erase Whiteboard
 Includes all mounting hardware
 Suitable for wall mount
 Fits inside 72" hutch cavity
 Available finish: White Glass (WH)



INV-2434MB
24" x 34" Glass Dry Erase Whiteboard
 Includes all mounting hardware
 Suitable for wall mount
 Available finish: White Glass (WH)